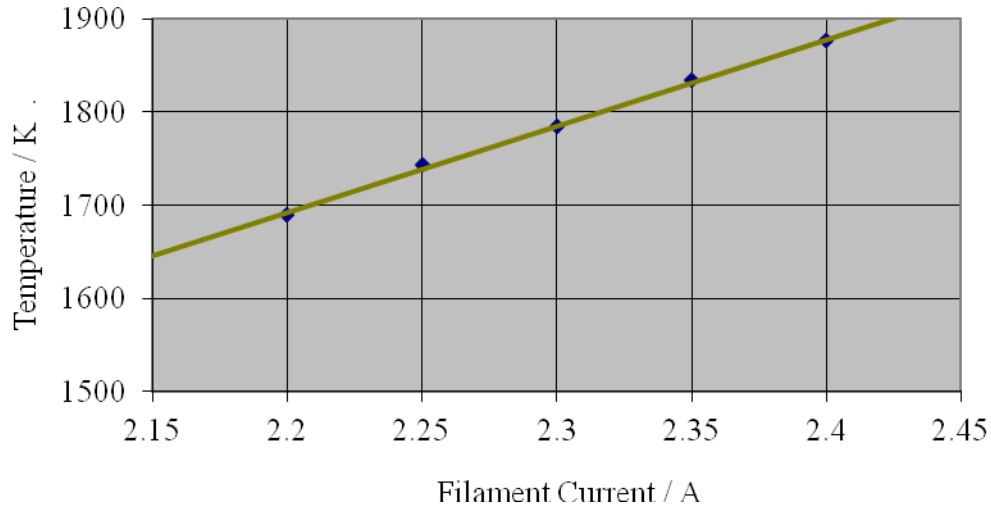


SCHOTTKY EMITTER DATA SHEET

Date: 15/1/14

S/N: YPS-1191

Temperature vs Current characteristics of the emitter:



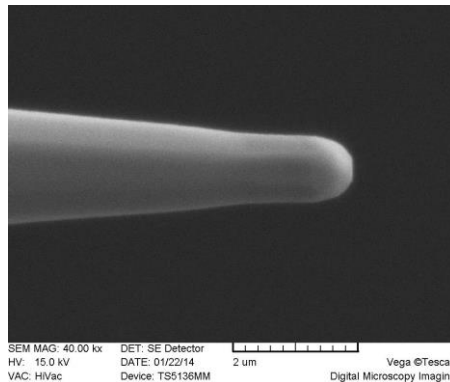
Emitter Performance:

$I_f = 2.3 \text{ A}$

Angular intensity $I (\mu\text{Astr}^{-1})$	Extractor voltage* $V_e (\text{kV})$	Total emission current $I_e (\mu\text{A})$
200	3.010	79
300	3.430	105
400	3.680	126
500	3.870	144

*Note tip to extractor distance = $350 \mu\text{m}$

SEM micrograph of emitter:



Emitter radius: $0.52 \mu\text{m}$

Distance tip protrudes from the suppressor: $250 \mu\text{m}$

Emitter chamber base pressure: $<2 \cdot 10^{-9} \text{ mbar}$

Maximum Emitter operating pressure: $<5 \cdot 10^{-9} \text{ mbar}$